

STYLE "MD" ELEVATOR BUCKETS for general purpose elevators



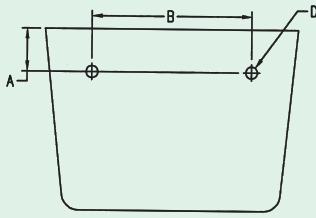
"MD" STYLE BUCKETS FOR K1 ATTACHMENTS

***K1 Attachment
SS Class
Bushed Steel Chain**

***K1 Attachment
MSR Class
Bushed Roller
Steel Chain**

***K1 Attachment
Combination Chain**

***(center hole only)**



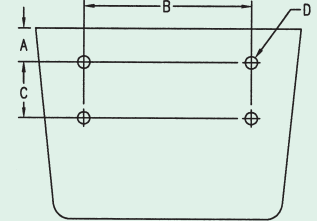
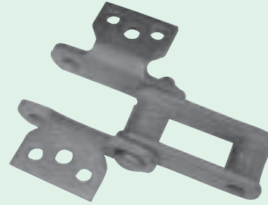
MOLINE BUCKETS FOR THESE K1 ATTACHMENTS	BUCKET CATALOG NUMBERS (With Nominal Bucket Dimensions in Inches)						BUCKET PUNCHING DIMENSIONS IN INCHES		
	43-MD (4X3)	64-MD (6X4)	85-MD (8X5)	106-MD (10X6)	126-MD (12X6)	127-MD (12X7)	A	B	D BOLT DIAM.
"MD" STYLE BUCKETS FOR MSR CLASS BUSHED ROLLER STEEL CHAIN									
MSR 3013-K1		X	X	X			1.00	2.94	0.31
MSR 4013-K1		X	X	X			1.00	2.75	0.38
"MD" STYLE BUCKETS FOR SS CLASS BUSHED STEEL CHAIN									
SS 188-K1		X	X	X	X		1.00	3.75	0.38
"MD" STYLE BUCKETS FOR COMBINATION CHAIN									
C 55-K1	X	X					0.50	2.00	0.25
C 77-K1		X	X	X			1.00	3.00	0.38
C 188-K1		X	X	X	X		1.00	3.75	0.38
"MD" STYLE BUCKETS FOR "H" CLASS MILL CHAIN									
H 60-K1		X	X	X			0.75	3.00	0.31
H 78-K1		X	X	X	X		1.00	4.00	0.38
"MD" STYLE BUCKETS FOR 400 CLASS PINTLE CHAIN									
445-K1	X	X					0.62	2.06	0.19
452-K1	X	X					0.75	2.06	0.19
455-K1	X	X					0.75	2.06	0.19
462-K1		X	X				0.75	2.38	0.25
477-K1		X	X	X			1.00	3.00	0.25
488-K1		X	X	X	X		1.00	3.81	0.25
"MD" STYLE BUCKETS FOR DETACHABLE CHAIN									
55-K1	X	X					0.50	2.00	0.19
57-K1		X	X	X			0.50	3.00	0.25
77-K1		X	X	X			1.00	3.00	0.25
78-K1		X	X	X	X		0.75	3.38	0.25
88-K1		X	X	X	X		0.75	3.81	0.31



STYLE "MD" ELEVATOR BUCKETS for general purpose elevators

"MD" STYLE BUCKETS FOR K2 ATTACHMENTS

**K2 Attachment
Combination Chain
(outer holes only)**



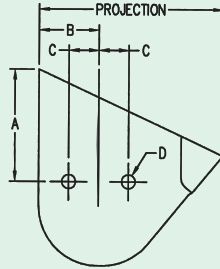
MOLINE BUCKETS FOR THESE K2 ATTACHMENTS	BUCKET CATALOG NUMBERS (With Nominal Bucket Dimensions in Inches)											BUCKET PUNCHING DIMENSIONS IN INCHES				
	64-MD (6X4)	85-MD (8X5)	106-MD (10X6)	126-MD (12X6)	127-MD (12X7)	147-MD (14X7)	148-MD (14X8)	167-MD (16X7)	168-MD (16X8)	188-MD (18X8)	1810-MD (18X10)	A	B	C	D BOLT DIAM.	HOLE DIAM.
"MD" STYLE BUCKETS FOR MSR CLASS BUSHED ROLLER STEEL CHAIN																
MSR 996-K2			X	X	X	X						1.38	4.38	3.00	0.50	0.56
MSR 1116-K2	X	X	X	X	X							0.62	4.00	2.00	0.38	0.44
MSR 6018-K2	X	X	X	X								0.62	4.00	2.00	0.38	0.44
"MD" STYLE BUCKETS FOR SS CLASS BUSHED STEEL CHAIN																
SS 102B-K2		X	X	X	X	X	X	X				0.75	5.31	1.75	0.38	0.44
SS 110-K2		X	X	X	X	X	X	X	X			0.88	5.31	1.75	0.38	0.44
SS 111-K2			X	X	X	X	X	X	X	X		0.75	6.25	2.31	0.50	0.56
SS 131-K2		X	X	X								1.00	4.12	1.50	0.50	0.56
SS 150+K2				X	X	X	X	X	X	X	X	1.00	7.50	2.75	0.50	0.56
SS 188-K2		X	X	X	X	X						0.75	4.19	1.25	0.31	0.38
SS 856-K2			X	X	X	X	X	X	X	X	X	1.00	6.31	2.25	0.50	0.56
"MD" STYLE BUCKETS FOR COMBINATION CHAIN																
C 102B-K2		X	X	X	X	X	X	X				0.75	5.31	1.75	0.38	0.44
C 102 1/2-K2		X	X	X	X	X	X	X				0.75	5.31	1.75	0.38	0.44
C 110-K2		X	X	X	X	X	X	X	X			0.88	5.31	1.75	0.38	0.44
C 111-K2			X	X	X	X	X	X	X	X		0.75	6.25	2.31	0.50*	0.56
C 111C-K2			X	X	X	X	X	X	X	X		0.75	6.25	2.31	0.50*	0.56
C 131-K2			X	X	X							1.00	4.12	1.50	0.50	0.56
C 132-K2				X	X	X	X	X	X	X	X	1.00	7.50	2.75	0.50	0.56
C 188-K2		X	X	X	X	X	X	X	X	X	X	0.75	4.19	1.25	0.31	0.38
"MD" STYLE BUCKETS FOR "H" CLASS MILL CHAIN																
H78-K2	X	X	X	X								0.62	4.00	1.12	0.38	0.44
H 82-K2		X	X	X	X	X						0.75	4.25	1.31	0.38	0.44
H 124-K2		X	X	X	X	X	X	X				0.88	5.25	1.94	0.38	0.44
"MD" STYLE BUCKETS FOR 400 CLASS PINTLE																
477-K2	X	X	X									0.75	3.00	0.81	0.25	0.31
488-K2	X	X	X	X								0.75	3.62	1.25	0.31	0.38
4103-K2		X	X	X								1.00	4.12	1.50	0.50	0.56
"MD" STYLE BUCKETS FOR 700 CLASS PINTLE CHAIN																
720-K2			X	X	X	X	X	X	X	X	X	1.00	6.00	2.62	0.50	0.56
730-K2			X	X	X	X	X	X	X	X	X	1.00	6.00	2.62	0.50	0.56
"MD" STYLE BUCKETS FOR DETACHABLE CHAIN																
95-K2		X	X	X	X	X	X	X	X			0.75	5.19	1.75	0.38	0.44
103-K2		X	X	X								0.75	4.12	1.50	0.50	0.56
108-K2			X	X	X	X	X	X	X	X		0.75	6.25	2.31	0.38	0.44
124-K2		X	X	X	X	X	X	X	X			0.88	5.25	1.94	0.38	0.44

*0.5" is ANSI standard: can also be furnished for 0.38" & 0.44" bolts when specified.

STYLE "MD" ELEVATOR BUCKETS for general purpose elevators



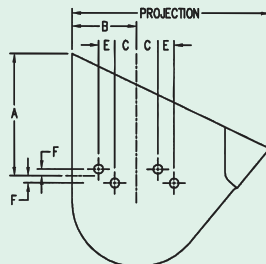
"MD" STYLE BUCKETS FOR G1 ATTACHMENTS



**G1 Attachment
400 Class Pintle**

MOLINE BUCKETS FOR THIS G1 ATTACHMENT	BUCKET CATALOG NUMBERS (With Nominal Bucket Dimensions in Inches)							
	106-MD (10X6)		127-MD (12X7) 147-MD (14X7) 167-MD (16X7)		148-MD (14X8) 168-MD (16X8) 188-MD (18X8)			
	BUCKET PROJECTIONS							
	6 Inches		7 Inches		8 Inches			
	BUCKET PUNCHING — DIMENSIONS IN INCHES							
	A	B	A	B	A	B	C	D BOLT DIAM.
3.12	2.62	3.75	2.50	4.88	2.62			
"MD" STYLE BUCKETS FOR 400 CLASS PINTLE								
477-G1	X	X	X	X	X	1.31	0.31	

MOLINE BUCKETS FOR THESE G6 ATTACHMENTS	BUCKET CATALOG NUMBERS (With Nominal Bucket Dimensions in Inches)								
	106-MD (10X6)		127-MD (12X7) 147-MD (14X7) 167-MD (16X7)		148-MD (14X8) 168-MD (16X8) 188-MD (18X8)				
	BUCKET PROJECTIONS								
	6 inches		7 inches		8 inches				
	BUCKET PUNCHING — DIMENSIONS IN INCHES								
	A	B	A	B	A	B	C	D BOLT DIAM.	E
3.12	2.62	3.75	2.50	4.88	2.62				
"MD" STYLE BUCKETS FOR COMBINATION CHAIN									
C131-G6	X	X	X	X	X	0.88	0.38	0.66	0.28
C188-G6	X	X	X	X	X	0.88	0.25	0.66	0.28



"MD" STYLE BUCKETS FOR G6 ATTACHMENTS

**G6 Attachment
Combination Chain**