

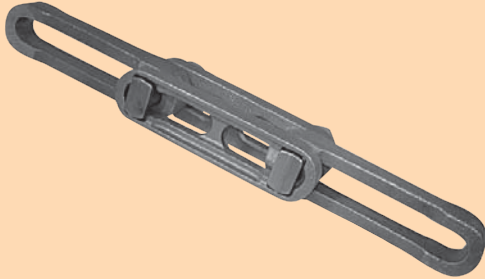
CAST MANGANESE STEEL RIVETLESS CHAIN



**Cast Manganese Steel
Rivetless Chain
with Attachments**

**For Coal Preparation and
Sliding Chain Applications**

PLAIN CHAIN



11%-14% Manganese Steel . . .

Manganese Steel work hardens to provide greater wear life in coal processing applications.

27% Greater Surface Contact Area . . .

Compared to drop forged rivetless chain.

2% chrome to resist corrosion.

DIMENSIONS (INCHES) AND WEIGHTS

ALLIED-LOCKE CHAIN NUMBER	ALLIED-LOCKE PART NUMBER	APPROX. LINKS IN 10 FT.	AVG. PITCH INCHES	RECOM. WORKING LOAD LBS.	WIDTH OVERALL A	HEIGHT OF SIDEBAR F	SIDEBAR THICKNESS EE	DIAMETER OF PIN G	WIDTH OF LINK J	BETWEEN SIDEBARS K	OPENING IN LINK S	LENGTH OF FLAT ON LINK Y	WEIGHT PER FOOT, LBS.
678	29001	20	6.031	8,500	3 ³ / ₁₆	2 ¹ / ₁₆	1 ³ / ₁₆	7/8	1 ⁵ / ₁₆	1 ³ / ₈	1 ⁵ / ₁₆	3 ²⁵ / ₃₂	7.5
698	29002	20	6.031	13,000	3 ⁷ / ₈	2 ¹¹ / ₁₆	1 ⁵ / ₁₆	1 ¹ / ₈	1 ¹ / ₁₆	1 ⁵ / ₈	1 ¹ / ₄	3 ²¹ / ₃₂	13.5
998	29003	13 ¹ / ₃	9.031	13,000	3 ⁷ / ₈	2 ¹¹ / ₁₆	1 ⁵ / ₁₆	1 ¹ / ₈	1 ¹ / ₁₆	1 ⁵ / ₈	1 ¹ / ₄	6 ³ / ₁₆	10.5
9118	29004	13 ¹ / ₃	9.031	22,000	4 ⁷ / ₈	3 ¹ / ₈	1 ⁵ / ₁₆	1 ³ / ₈	1 ³ / ₈	2 ¹ / ₁₆	1 ¹ / ₂	6 ³ / ₁₆	17.5

NOTE: Dimensions subject to change. Certified dimensions of ordered material furnished on request.

CHAIN ATTACHMENTS

Allied-Locke provides the most complete line of attachments for the Rivetless Chain. Coupler pins for simplifying installation are also available.

EXTENDED PINS

	678			698			998			9118	
	D4	D5	D6	D7	D8	D9	D7	D8	D9	D10	D11
G (Diameter)	7/8	7/8	3/4	3/4	7/8	1 1/8	3/4	7/8	1 1/8	3/4	1 3/8
L (Length)	1 1/2	2	1 7/8	1 1/2	1 3/4	1 3/4	1 1/2	1 3/4	1 3/4	2	2
Wgt. (Lbs.)	1.0	1.1	1.1	1.5	1.7	2.0	1.5	1.7	2.0	2.9	3.6

Extended pins can be furnished (a) plain; (b) plain, with hole and cotter; (c) threaded with endhole, cotter, and castle nut. Extended lengths listed are maximum; shorter lengths (by cutting off) can be furnished at slight additional charge. D1 thru D11 listed above are threaded national course thread supplied with lock washer and heavy hex nut.

D1, D2, D3, D4, D5, D6, D7, D8, D9, D10, D11

Allied-Locke Industries Inc.

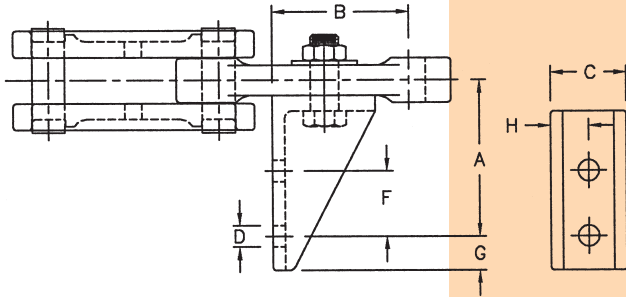
. . . reach for the star of quality
www.alliedlocke.com

Segmental sprockets are available with cast manganese steel teeth and cast or fabricated steel bodies.

Teeth can easily be replaced without removing the chain from sprockets.



CAST MANGANESE STEEL RIVETLESS CHAIN



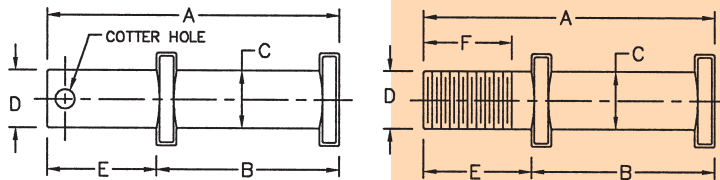
S22

ALLIED-LOCKE CHAIN NUMBER	ALLIED-LOCKE PART NUMBER	E	D*	F	H	B	C	T	WEIGHT EA., LBS.
S22 STYLE 1									
678	29001	2 ³¹ / ₃₂	5/8	1 ¹³ / ₁₆	4 ¹⁵ / ₁₆	4 ¹¹ / ₁₆	4 ¹ / ₁₆	5/16	4.7**§
698	29002	3 ⁹ / ₃₂	3/4	2 ³ / ₈	6 ⁵ / ₈	4 ¹ / ₄	5 ³ / ₈	1/2	9.8**§
998	29003	3 ⁹ / ₃₂	3/4	2 ³ / ₈	6 ⁷ / ₈	7 ¹ / ₄	5 ³ / ₈	3/8	11.3**§

*Indicates diameter of bolt; all holes are round and straight.

**Including bolts.

§Including filler block.



EXTENDED PINS

CHAIN NO.	PIN STYLE	WT. EA. LBS.	A	B	C	D	E	F
678	1	1.0	4 ¹¹ / ₁₆	3 ³ / ₁₆	7/8	7/8	1 ¹ / ₂	1 ¹ / ₄
678	1	1.1	5 ³ / ₁₆	3 ³ / ₁₆	7/8	7/8	2	1 ³ / ₄
678	1	1.1	5 ¹ / ₁₆	3 ³ / ₁₆	7/8	3/4	1 ⁷ / ₈	1 ¹ / ₂
678	2	1.0	4 ¹¹ / ₁₆	3 ³ / ₁₆	7/8	7/8	1 ¹ / ₂	—
678	2	1.1	5 ³ / ₁₆	3 ³ / ₁₆	7/8	7/8	2	—
678	2	1.1	5 ¹ / ₁₆	3 ³ / ₁₆	7/8	3/4	1 ⁷ / ₈	—
698 & 998	1	1.5	5 ³ / ₈	3 ⁷ / ₈	1 ¹ / ₈	3/4	1 ¹ / ₂	1
698 & 998	1	1.7	5 ⁵ / ₈	3 ⁷ / ₈	1 ¹ / ₈	7/8	1 ³ / ₄	1 ¹ / ₄
698 & 998	1	2.0	5 ⁵ / ₈	3 ⁷ / ₈	1 ¹ / ₈	1 ¹ / ₈	1 ³ / ₄	1 ¹ / ₄

Allied-Locke Industries Inc.

. . . chain - sprockets - buckets

www.alliedlocke.com