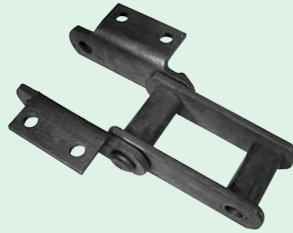
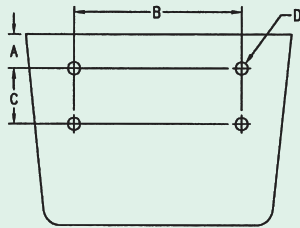


STYLE "AC" ELEVATOR BUCKETS for handling cement, lime, and fluffy materials

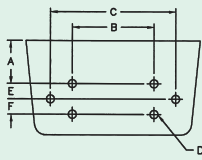


"AC" STYLE BUCKETS FOR K2 ATTACHMENTS

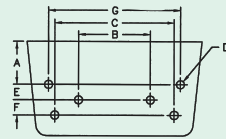


**K2 Attachment
SS Class
Bushed Steel Chain**

MOLINE BUCKETS FOR THESE K2 ATTACHMENTS	BUCKET CATALOG NUMBERS (With Nominal Bucket Dimensions in Inches)				BUCKET PUNCHING DIMENSIONS IN INCHES			
	128-AC (12X8)	168-AC (16X8)	1810-AC (18X10)	2410-AC (24X10)	A	B	C	D BOLT DIAM.
SS 111-K2	X	X			4.12	6.25	2.31	0.50
SS 150+-K2	X	X			3.88	7.50	2.75	0.50
SS 150+-K2			X	X	5.12	7.50	2.75	0.50
SS 856-K2	X	X			4.12	6.31	2.25	0.50
SS 856-K2			X	X	5.38	6.31	2.25	0.50



SS150 & K3



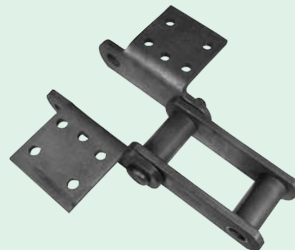
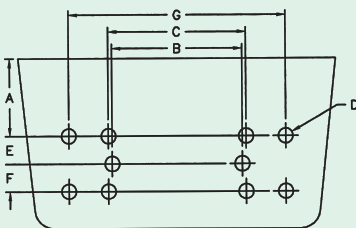
SS856-K3



"AC" STYLE BUCKETS FOR K3 ATTACHMENTS

**K3 Attachment
SS Class
Bushed Steel Chain**

MOLINE BUCKETS FOR THESE K3 ATTACHMENTS	BUCKET CATALOG NUMBERS (With Nominal Bucket Dimensions in Inches)				BUCKET PUNCHING DIMENSIONS IN INCHES						
	128-AC (12X8)	168-AC (16X8)	1810-AC (18X10)	2410-AC (24X10)	A	B	C	D BOLT DIAM.	E	F	G
SS 150+-K3		X			3.88	7.50	11.50	0.50	1.38	1.38	
SS 150+-K3			X	X	5.12	7.50	11.50	0.50	1.38	1.38	
SS 856-K3		X			3.88	6.56	10.94	0.50	1.38	1.38	12.06
SS 856-K3			X	X	5.12	6.56	10.94	0.50	1.38	1.38	12.06



"AC" STYLE BUCKETS FOR K6 ATTACHMENTS

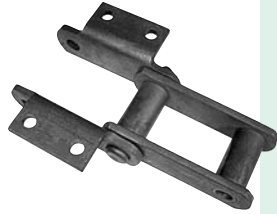
**K6 Attachment
SS Class
Bushed Steel Chain**

MOLINE BUCKETS FOR THESE K6 ATTACHMENTS	BUCKET CATALOG NUMBERS (With Nominal Bucket Dimensions in Inches)			BUCKET PUNCHING DIMENSIONS IN INCHES						
	168-AC (16X8)	1810-AC (18X10)	2410-AC (24X10)	A	B	C	D BOLT DIAM.	E	F	G
SS 856-K6	X			3.88	6.56	6.94	0.50	1.38	1.38	10.94
SS 856-K6		X	X	5.12	6.56	6.94	0.50	1.38	1.38	10.94

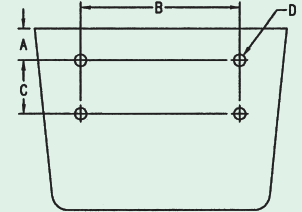


STYLE "AC" ELEVATOR BUCKETS for handling cement, lime, and fluffy materials

"AC" STYLE BUCKETS FOR K24 ATTACHMENTS



K24 Attachment SS Class Bushed Steel Chain

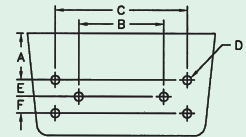


MOLINE BUCKETS FOR THESE K24 ATTACHMENTS	BUCKET CATALOG NUMBERS (With Nominal Bucket Dimensions in Inches)			BUCKET PUNCHING Dimensions in Inches			
	128-AC (12X8)	168-AC (16X8)	1810-AC (18X10)	A	B	C	D BOLT DIAM.
SS 856-K24	X	X		4.00	7.25	2.50	0.62
SS 856-K24			X	5.25	7.25	2.50	0.62

"AC" STYLE BUCKETS FOR K35 ATTACHMENTS



K35 Attachment SS Class Bushed Steel Chain



MOLINE BUCKETS FOR THESE K35 ATTACHMENTS	BUCKET CATALOG NUMBERS (With Nominal Bucket Dimensions in Inches)		BUCKET PUNCHING Dimensions in Inches					
	168-AC (16X8)	1810-AC (18X10)	A	B	C	D BOLT DIAM.	E	F
SS 856-K35	X		4.00	7.25	11.75	0.62	1.25	1.25
SS 856-K35		X	5.25	7.25	11.75	0.62	1.25	1.25

WEIGHTS OF BULK MATERIALS

BULK MATERIALS	UNIT WT. LBS. PER CU. FT.	BULK MATERIALS	UNIT WT. LBS. PER CU. FT.	BULK MATERIALS	UNIT WT. LBS. PER CU. FT.	BULK MATERIALS	UNIT WT. LBS. PER CU. FT.
Alum, lumpy	50-60	Coke, breeze	34-45	Lime, hydrated	32-40	Slag, furnace—granulated	60-65
Alum, fine	45-60	Coke, fluid	55-60	Lime, pebble	56	Slag, crushed	85-90
Aluminum Oxide (Alumina)	55	Coke, loose	23-32	Limestone, crushed	85-90	Slate, crushed	80-90
Anthracite—fines	50-60	Coke, petroleum	35-42	Limestone, pulverized*	65	Soda ash, heavy	55-65
Ashes, cool—wet	45-50	Cork, ground-dry	12	Limestone, chips	85-90	Soda ash, light	20-35
Ashes, cool—dry	35-40	Cullet, crushed	100	Limestone, agricultural*	65---70	Starch	45
Asphalt, pellets	45	Dolomite, crushed	90-100	Mica, flake	17-22	Sugar, beet pulp—dry	12-45
Bauxite, crushed	75-85	Feldspar, ground	65-70	Millscale	100-125	Sugar, beet pulp—wet	25-45
Bentonite, fine—dry*	50	Feldspar, powered	65-70	Magnesite, fines	65-75	Sugar, refined	50-55
Bonemeal	55-60	Flue, dust*	40-65	Marble, chips	90-95	Talc*	50-60
Bones, crushed	35-40	Fluorspar	110	Pecan shells	20	Traprock, crushed	100
Borax	50-55	Foundry refuse	90	Phosphate, acid—powder	60	Taconite pellets	125
Calcium, chloride	75	Fullers earth, raw	35-40	Phosphate, rock—crushed	75-85	Titanium dioxide	25
Carbon black, pellets	25	Fullers earth, spent	35-40	Phosphate, sands	90-100	Wood chips	15-25
Caustic Soda	88	Glass batch	90	Phosphate, triple super-dry	75	Zinc ore, crushed	150
Cement, clinker	85-95	Grain	10-50	Plastic, powder—dry	12		
Cement, Portland*	65	Granite, broken	95-100	Potash, coarse	65-75		
Cement rock, crushed	85-95	Graphite, flake	40	Potash, fines	65-70		
Chalk, crushed	85-90	Gravel, screened	90-100	Pumice, ground*	42-45		
Chalk, pulverized	70-75	Gypsum, calcined*	55-60	Salt, cake	65-85		
Charcoal	15-30	Gypsum, crushed	90-100	Salt, refined	70-80		
Clay, ground—dry	100	Gypsum, powdered*	60-80	Salt, rock—coarse	45-50		
Coal, bituminous—slack	40-45	Ice, crushed	32-45	Sand, damp	110-130		
Coal, bituminous—fines	50-56	Iron ore, crushed	125	Sand, dry	90-100		
Coal, bituminous—pulverized	32-35	Iron pyrites, fines	125	Sawdust	13		
Coal, lignite	45-55	Lime, ground*	60	Shale, crushed	85-90		

*Buckets for these materials must have air vent holes drilled into their bottoms for entrapped air control if rated capacities are to be obtained. Approximately 25% reduction of rated capacities is to be expected if buckets are operated at "water level" fullness.